

**REX**LiTE<sup>®</sup>

2020  
ISSUE



M9L  
REXMode

**REX<sup>Li</sup>TE<sup>®</sup>**  
瑞司照明系統



Origin : Taiwan

Note : Open Ø80 x HG5 mm

Color : Black / White

Beam Angle : Spotlight, 10° / 24° / 38°

Dimension : Ø89 x HG60 mm

LED Source : NICHIA LED

LED Specs : Ra  $\geq$  90 LM80 2,700K ~ 5,000K R9 > 50

Color Tolerance Adjustment : SDCM  $\leq$  2

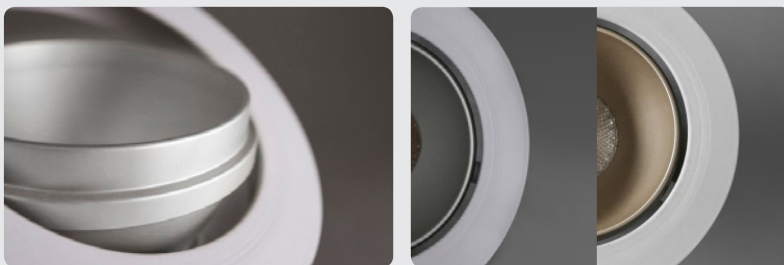
Luminous Flux : 1,000 Lm

Power Consumption : 9W



M9M  
REXMode

**REX**LiTE®  
瑞司照明系統



Origin : Taiwan

Note : Open Ø80 x H80 mm

Color : Black / White

Beam Angle : Spotlight, 10°

Dimension : Ø89 x H75 mm

LED Source : NICHIA LED

LED Specs : Ra  $\geq$  90 LM80 2,700K ~ 5,000K R9>50

Color Tolerance Adjustment : SDCM  $\leq$  2

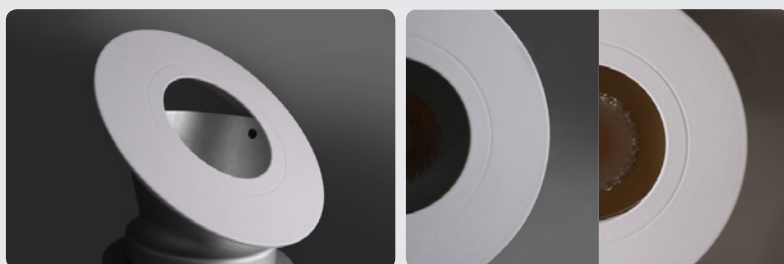
Luminous Flux : 940 Lm

Power Consumption : 9W



M9S  
REXMode

**REX**LITE®  
瑞司照明系統



Origin : Taiwan

Note : Open Ø65 x H80 mm

Color : Black / White

Beam Angle : Spotlight, 10°

Dimension : Ø75 x H75 mm

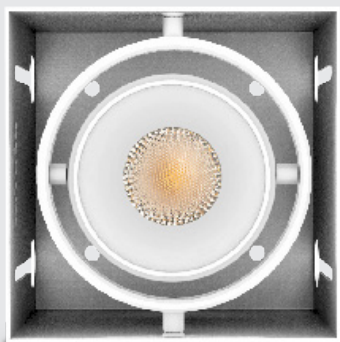
LED Source : NICHIA LED

LED Specs : Ra  $\geq$  90 LM80 2,700K ~ 5,000K R9>50

Color Tolerance Adjustment : SDCM  $\leq$  2

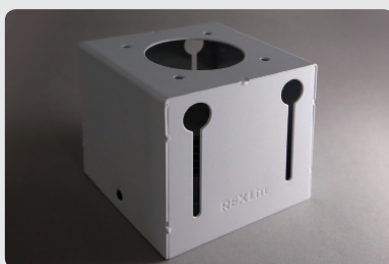
Luminous Flux : 720 Lm

Power Consumption : 9W



M9-N1 / N2 / N3  
REXMode

**REX**LiTE®  
瑞司照明系統



Origin : Taiwan

Color : Black / White

Beam Angle : Spotlight, 10° / 24° / 38°

Dimension : L 95 × W97 × H90 mm

L190 × W97 × H90 mm

L285 × W97 × H90 mm

LED Source : NICHIA LED

LED Specs : Ra ≥ 90 LM80 2,700K ~ 5,000K R9>50

Color Tolerance Adjustment : SDCM ≤ 2

Luminous Flux : 1,000 Lm / 2,000 Lm / 3,000 Lm

Power Consumption : 9W / 18W / 27W

Bore Dimension : L 97 × W97 × H95 mm

L192 × W97 × H95 mm

L287 × W97 × H95 mm

Note : Low Glare

Two Axis Rotary





C5  
REXCypher



**REXITE**<sup>®</sup>  
瑞司照明系統

Origin : Taiwan

Color : White

Beam Angle : Flood

Dimension :  $\varnothing 150 \times H36$  mm

LED Source : NICHIA LED

LED Specs :  $R_a \geq 90$  LM80 2,700K ~ 5,000K  $R9 > 50$

Color Tolerance Adjustment : SDCM  $\leq 3$

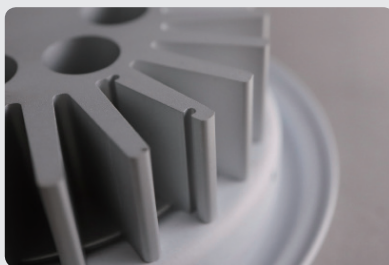
Luminous Flux : 1,520 Lm

Power Consumption : 14W

Note : Open  $\varnothing 135 \times H40$  mm



C1  
REXCypher



**REX**LITE<sup>®</sup>  
瑞司照明系統

Origin : Taiwan

Color : White

Beam Angle : Flood

Dimension :  $\varnothing 111 \times H40$  mm

LED Source : NICHIA LED

LED Specs :  $R_a \geq 90$  LM80 2,700K ~ 5,000K  $R_9 > 50$

Color Tolerance Adjustment :  $SDCM \leq 3$

Luminous Flux : 820 Lm

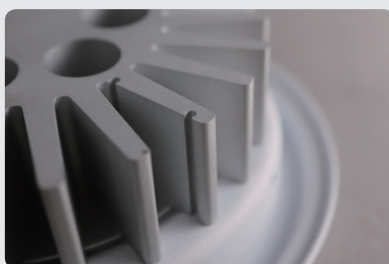
Power Consumption : 8.5W

Note : Open  $\varnothing 100 \times H45$  mm



A1  
REXArtem

**REX**LITE®  
瑞司照明系統



Origin : Taiwan

Color : White

Beam Angle : AR111 Spotlight, 25°

Dimension : Ø111 × H35 mm

LED Source : NICHIA LED

LED Specs : Ra ≥ 90 LM80 2,700K ~ 5,000K R9>50

Color Tolerance Adjustment : SDCM ≤ 3

Luminous Flux : 700 Lm

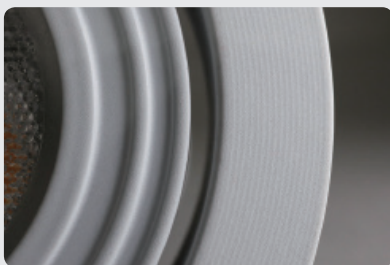
Power Consumption : 8.5W

Note : Open Ø100 × H40 mm





M5  
REXMode



**REX**LITE<sup>®</sup>  
瑞司照明系統

Origin : Taiwan

Note : Open  $\varnothing 70 \times H50$  mm

Color : Black / White / Aluminum

Beam Angle : Spotlight, 25° / 40°

Dimension :  $\varnothing 80 \times H45$  mm

LED Source : NICHIA LED

LED Specs :  $R_a \geq 90$  LM80 2,700K ~ 5,000K  $R9 > 50$

Color Tolerance Adjustment : SDCM  $\leq 3$

Luminous Flux : 475 Lm

Power Consumption : 5.5W



M2  
REXMini

**REX**LiTE<sup>®</sup>  
瑞司照明系統



Origin : Taiwan

Color : Aluminum

Beam Angle : Spotlight, 25°

Dimension : Ø49 × H30 mm

LED Source : NICHIA LED

LED Specs : Ra ≥ 90 LM80 2,700K ~ 5,000K R9>50

Color Tolerance Adjustment : SDCM ≤ 3

Luminous Flux : 100Lm

Power Consumption : 1.5W

Note : Open Ø45 × H35 mm



QA1-N1 / N2 / N3  
QubicArtem

**REX LITE**<sup>®</sup>  
瑞司照明系統



Origin : Taiwan

Color : Black / White

Beam Angle : Spotlight, 25°

Dimension : L150 × W150 × H100 mm

L300 × W150 × H100 mm

L450 × W150 × H100 mm

Luminous Flux : 700 / 1,400 / 2,100 Lm

Power Consumption : 8.5 / 17 / 25.5 W

Bore Dimension : L152 × W152 × H105 mm

L302 × W152 × H105 mm

L452 × W152 × H105 mm

Note :

LED Source : NICHIA LED

LED Specs : Ra ≥ 90 LM80 2,700K ~ 5,000K R9>50

Color Tolerance Adjustment : SDCM ≤ 3



QC1-N1 / N2 / N3  
QubicCypher

**REX LITE**<sup>®</sup>  
瑞司照明系統



Origin : Taiwan

Color : Black / White

Beam Angle : Flood

Dimension : L150 × W150 × H100 mm

L300 × W150 × H100 mm

L450 × W150 × H100 mm

Luminous Flux : 820 Lm / 1,640 Lm / 2,750 Lm

Power Consumption : 8.5W / 17W / 25.5W

Bore Dimension (mm) : L152 × W152 × H105 mm

L302 × W152 × H105 mm

L452 × W152 × H105 mm

Note :

LED Source : NICHIA LED

LED Specs : Ra ≥ 90 LM80 2,700K ~ 5,000K R9>50

Color Tolerance Adjustment : SDCM ≤ 3

# QubicCypher Series



QC9N  
QubicCypher

**REX LITE**<sup>®</sup>  
瑞司照明系統



Origin :

Color : White / Black

Beam Angle : 24°

Dimension :  $\varnothing$  100 × H100 mm

LED Specs : Ra  $\geq$  90 3,000K / 4,000K

Color Tolerance Adjustment : SDCM  $\leq$  3

Luminous Flux : 650 Lm

Power Consumption : 9W

Note :

# QubicCypher Series



QC16N  
QubicCypher

REX<sup>®</sup>LITE  
瑞司照明系統



Origin :

Color : White / Black

Beam Angle : 24°

Dimension :  $\varnothing$  134 × H123 mm

LED Specs :  $R_a \geq 90$  3,000K / 4,000K

Color Tolerance Adjustment : SDCM  $\leq 3$

Luminous Flux : 1200 Lm

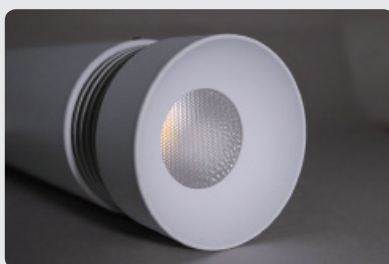
Power Consumption : 16W

Note :



M9-T  
REXMode

**REX**LiTE<sup>®</sup>  
瑞司照明系統



Origin : Taiwan

Color : Black / White

Beam Angle : Spotlight, 10° / 24° / 38°

Dimension : Ø60 x W185 x H150 mm

LED Source : NICHIA LED

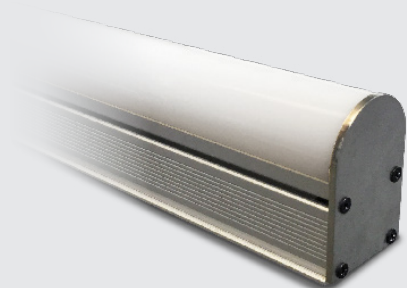
LED Specs : Ra  $\geq$  90 LM80 2,700K ~ 5,000K R9 > 50

Color Tolerance Adjustment : SDCM  $\leq$  2

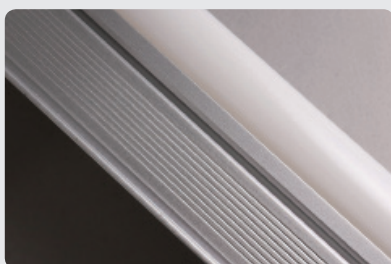
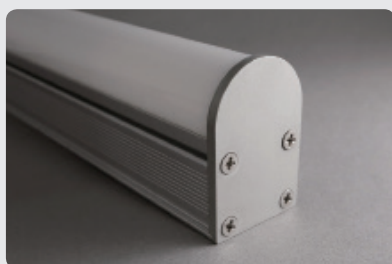
Luminous Flux : 1,000 Lm

Power Consumption : 9W

Note : 2 / 4 / 6 wires tracking system



E1R / E2R / E3R / E4R  
IP68  
REXEmi



**REX**LiTE®  
瑞司照明系統

Origin : Taiwan

Color : Aluminum

Beam Angle : Linear Flood Light

Dimension : L 300 × W32 × H47 mm

L 500 × W32 × H47 mm

L1,000 × W32 × H47 mm

L1,500 × W32 × H47 mm

LED Source : NICHIA LED, RGB in one

LED Specs : R : 850 mcd / 550nm ~ 670nm @20mA

G : 2,000 mcd / 430nm ~ 640nm @20mA

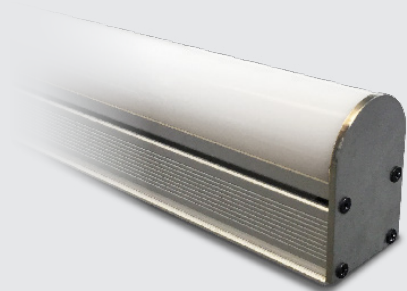
B : 400 mcd / 400nm ~ 570nm @20mA

Power Consumption : 14W / 23W / 46W / 68W

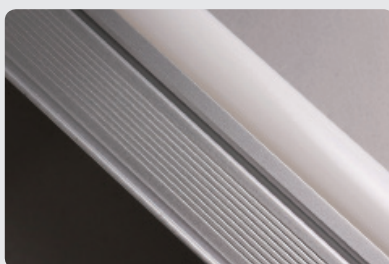
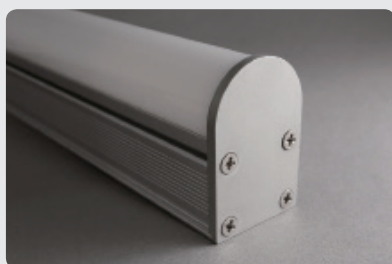
Note : Heat Sink Temp. < 70°C

DMX Control





E1W / E2W / E3W / E4W  
IP68  
REXEmi



**REX**LiTE®  
瑞司照明系統

Origin : Taiwan

Color : Black / White

Beam Angle : Linear Flood Light

Dimension : L 300 × W32 × H47 mm

L 500 × W32 × H47 mm

L1,000 × W32 × H47 mm

L1,500 × W32 × H47 mm

LED Source : NICHIA LED

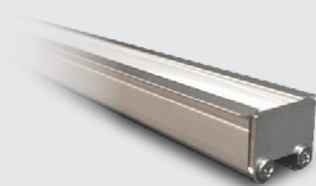
LED Specs : Ra ≥ 90 LM80 2,700K ~ 5,000K R9>50

Luminous Flux : 300 Lm / 500 Lm / 1,000 Lm / 1,500 Lm

Power Consumption : 5W / 8W / 16W / 24W

Note : Heat Sink Temp. <70°C

DMX Control



RN105 / RN110 / RN115 / RN120  
REXNephia



**REX**LiTE<sup>®</sup>  
瑞司照明系統

Origin : Taiwan

Color : Aluminum

Beam Angle : Linear Light, Flood, Embedded

Dimension : L 507 × W15 × H10 mm

L1,007 × W15 × H10 mm

L1,507 × W15 × H10 mm

L2,007 × W15 × H10 mm

LED Source : NICHIA LED

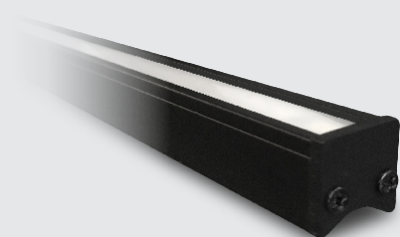
LED Specs : Ra ≥ 90 LM80 2,700K ~ 5,000K R9>50

Color Tolerance Adjustment : SDCM ≤ 3

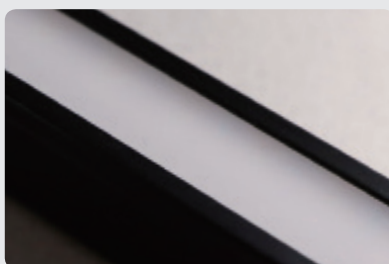
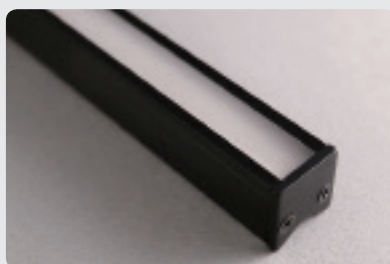
Luminous Flux : 400 Lm / 800Lm / 1,200Lm / 1,600Lm

Power Consumption : 3.5W / 7W / 10.5W / 14W

Note : Open L × W | 1.8 × H > 18mm



RN205 / RN210 / RN215 / RN220  
REXNephia



**REX**LITE®  
瑞司照明系統

Origin : Taiwan

Color : Black

Beam Angle : Linear Light, Flood, Embedded / Suspension

Dimension : L 509 × W13.5 × H14.2 mm

L1,009 × W13.5 × H14.2 mm

L1,509 × W13.5 × H14.2 mm

L2,009 × W13.5 × H14.2 mm

LED Source : NICHIA LED

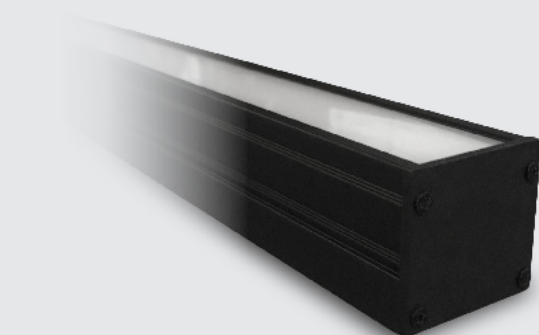
LED Specs : Ra ≥ 90 LM80 2,700K ~ 5,000K R9>50

Color TolCerance Adjustment : SDCM ≤ 3

Luminous Flux : 400 Lm / 800Lm / 1,200Lm / 1,600Lm

Power Consumption : 3.5W / 7W / 10.5W / 14W

Note : Open L × W13.5 × H>14.2mm



RN405 / RN410 / RN415 / RN420  
REXNephia



**REX**LITE®  
瑞司照明系統

Origin : Taiwan

Color : Black

Beam Angle : Linear Light, Flood, Embedded / Suspension

Dimension : L 509 × W31 × H30 mm

L1,009 × W31 × H30 mm

L1,509 × W31 × H30 mm

L2,009 × W31 × H30 mm

LED Source : NICHIA LED

LED Specs : Ra ≥ 90 LM80 2,700K ~ 5,000K R9>50

Color Tolerance Adjustment : SDCM ≤ 3

Luminous Flux : 800 Lm / 1,600 Lm / 2,400 Lm / 3,200 Lm

Power Consumption : 7W / 14W / 21W / 28W

Note : Open L × W31 × H>38mm



L1 / L2 / L3 / L4  
REXLinac



**REXLite**<sup>®</sup>  
瑞司照明系統

Origin : Taiwan

Color : Champagne

Beam Angle : Linear Light, 120°

Dimension : L 295 x W33 x H15 mm

L 585 x W33 x H15 mm

L 885 x W33 x H15 mm

L1,185 x W33 x H15 mm

LED Source : NICHIA LED

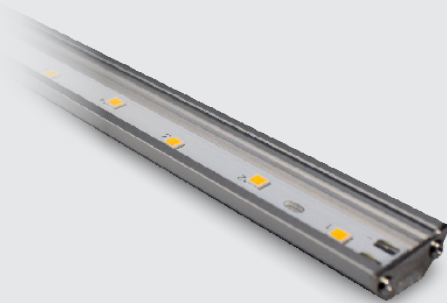
LED Specs : Ra ≥ 90 LM80 2,700K ~ 5,000K R9>50

Color Tolerance Adjustment : SDCM ≤ 3

Luminous Flux : 710 Lm / 1,420 Lm / 2,130 Lm / 2,840 Lm

Power Consumption : 7W / 14W / 21W / 28W

Note :



QL1 / QL2 / QL3 / QL4  
QubicLine

**REXLiTE**<sup>®</sup>  
瑞司照明系統



Origin : Taiwan

Color : Frosted Aluminum

Beam Angle : Linear Light, 120°

Dimension : L 285 × W20 × H8 mm

L 585 × W20 × H8 mm

L 875 × W20 × H8 mm

L 1,170 × W20 × H8 mm

LED Source : NICHIA LED

LED Specs : Ra ≥ 90 LM80 2,700K ~ 5,000K R9>50

Color Tolerance Adjustment : SDCM ≤ 3

Luminous Flux : 350 Lm / 700 Lm / 1,050 Lm / 1,750 Lm

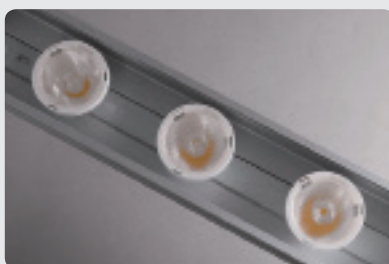
Power Consumption : 3.5W / 7W / 10.5W / 14W

Note :



RH1 / RH2 / RH3 / RH4  
IP68  
REXHiking

**REX**LiTE<sup>®</sup>  
瑞司照明系統



Origin : Taiwan

Color : Aluminum

Beam Angle : Outdoor Spotlight, 25° / 40° / 80° / Wall wash

Dimension : L 295 x W60 x H85 mm

L 585 x W60 x H85 mm

L 885 x W60 x H85 mm

L 1,185 x W60 x H85 mm

LED Source : NICHIA LED

LED Specs : Ra  $\geq$  90 LM80 2,700K ~ 5,000K R9>50

LED Specs : Ra  $\geq$  90 LM80 2,700K ~ 5,000K R9>50

Luminous Flux : 585Lm / 1,170 Lm / 1,755Lm / 2,340 Lm

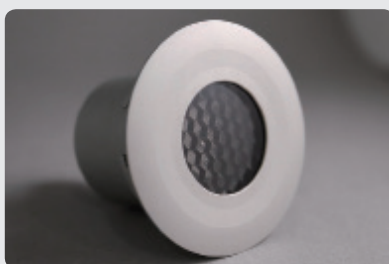
Power Consumption : 7W / 14W / 21W / 28W

Note :



MG2  
IP65  
REXMini

**REX<sup>®</sup>LITE**  
瑞司照明系統



Origin : Taiwan

Note : Open  $\varnothing$ 45 x H 75 mm

Color : Black / White / Aluminum

Beam Angle : Spotlight, 25°

Dimension :  $\varnothing$ 49 x H65 mm

LED Source : NICHIA LED

Color Tolerance Adjustment : SDCM  $\leq$  3

LED Specs : Ra  $\geq$  90 LM80 2,700K ~ 5,000K R9>50

Luminous Flux : 100 Lm

Power Consumption : 1.5W





QG2  
IP68  
QubicGuard



**REX LITE**<sup>®</sup>  
瑞司照明系統

Origin : Taiwan

Color : Stainless Steel

Beam Angle : Flood Ground Light

Dimension :  $\varnothing 100 \times H70$  mm

LED Source : NICHIA LED

LED Specs :  $R_a \geq 90$  LM80 2,700K ~ 5,000K  $R9 > 50$

Luminous Flux : 100 Lm

Power Consumption : 1.5W

Note : Open  $\varnothing 90 \times H75$  mm



RS  
IP68  
REXStream

**REX**LiTE®  
瑞司照明系統



Origin : Taiwan

Color : Transparent

Beam Angle : Soft Strip Light, 120°

Dimension : L x W 12 x H 6 mm

LED Source : NICHIA LED, Mono color

LED Specs : Ra  $\geq$  90 LM80 2,700K ~ 5,000K / Color R9 > 50

Color Tolerance Adjustment : SDCM  $\leq$  3

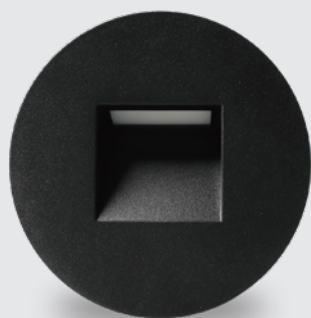
Luminous Flux : 450 Lm

Power Consumption : 5W / M

Note : Mono color

Soft Strip Light

Silicone Tube



QubicNox QN4R  
Qubic Nox

**REX**LITE®  
瑞司照明系統

Origin : Taiwan

Color : Black

Beam Angle : Flood

Dimension :  $\varnothing 95 \times H33$  mm

LED Source : Osram , Seoul

LED Specs :  $R_a \geq 90$  ,  $R_9 > 50$  , 2700K / 3000K / 2200~3000K

Color Tolerance Adjustment :  $SDCM \leq 3$

Luminous Flux : 65 / 62 / 70 Lm

Power Consumption : 9W

Note : Open  $W53 \times H60$  mm



QubicNox QN4S  
Qubic Nox

**REX**LITE®  
瑞司照明系統

Origin : Taiwan

Color : Black

Beam Angle : Flood

Dimension : 85 × 85 × H33 mm

LED Source : Osram , Seoul

LED Specs : Ra  $\geq$  90 , R9 > 50 , 2700K / 3000K / 2200~3000K

Color Tolerance Adjustment : SDCM  $\leq$  3

Luminous Flux : 65 / 62 / 70 Lm

Power Consumption : 4W

Note : Open W53 × H60 mm

# REX<sup>Li</sup>TE<sup>®</sup>

瑞司照明系統

FISHBONE Design

觀境設計股份有限公司



REX<sup>Li</sup>TE<sup>®</sup>



CASAMBI

TCI<sup>®</sup>

GLOBAL<sup>®</sup>

ZUSU

techno

STEAB

41263 台中市大里區  
西湖路187巷108號(總公司)  
No.108, Ln.187, Xihu Rd., Dali Dist.,  
Taichung City 41263, Taiwan (Headquarter)

40854 台中市南屯區  
文心南路39號 (Showroom)  
No. 39, Wenxin S. Rd., Nantun Dist.,  
Taichung City 408, Taiwan

10658 台北市大安區  
建國南路二段69巷56號 (Showroom)  
No.56, Ln. 69, Sec. 2, Jianguo S. Rd., Da' an Dist.,  
Taipei City 10658, Taiwan

T +886-4-2496-4053

F +886-4-2496-0497

W www.rexlite.com.tw

f REXLITE

@ rexlite.tw

客服專線 TEL 0800-279-979